

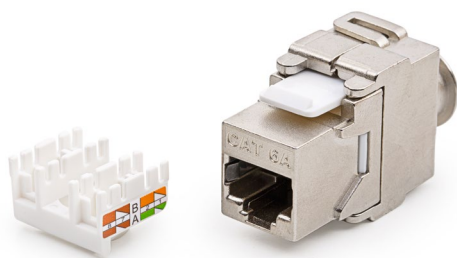
# Keystone Jack, Category 6A, RJ45/s

P/N: KEJ-CEA-S-10G

**10**  
Gigabit

**Cat.6A**  
system

**500**  
MHz

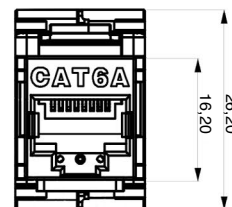
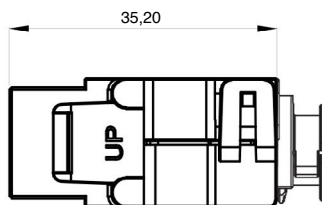
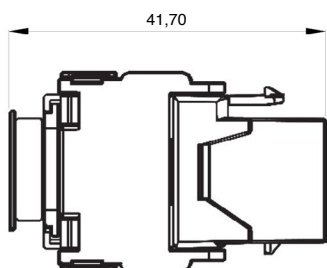


### features

- tool-free, fast and easy installation
- enables transmission of all high-speed protocols including 10GBASE-T within the system
- guarantees a bandwidth of 500 MHz within the system
- perfectly shielded against Alien Crosstalk and electromagnetic interference
- suitable for a wide range of outlets, duct and channel systems

### application

- primary (Campus), secondary (Riser), tertiary (Horizontal)
- IEEE 802.3: 10Base-T; 100Base-T; 1000Base-T; 10GBase-T
- IEEE 802.5 16 MB; ISDN; FDDI; ATM
- high bandwidth digital applications with low BER
- multimedia transmissions like digital and analog video and voice



### mechanical properties

Suitable for installing on	cables with solid wires	from 0,51 to 0,64 mm (AWG 24 - AWG 22)
Required installation depth	15 - 40 mm sockets with angled faceplates	
	40 mm - sockets with straight faceplates	
Contact pin material	phosphor-bronze alloy coated with 6 µ of gold	
Insertion / extraction cycles RJ45	min. 750	
Temperature range	operation	-40°C to +70°C
	installation	-10°C to +60°C
IDC reterminations	min.20	

### electrical properties at 20°C

Current rating	1,5A max
Contact resistance of spring	100 mΩ max
Dielectric strenght	750Vac/ 1 minúta
Insulation resistance	1000 MΩ min @ 500Vdc